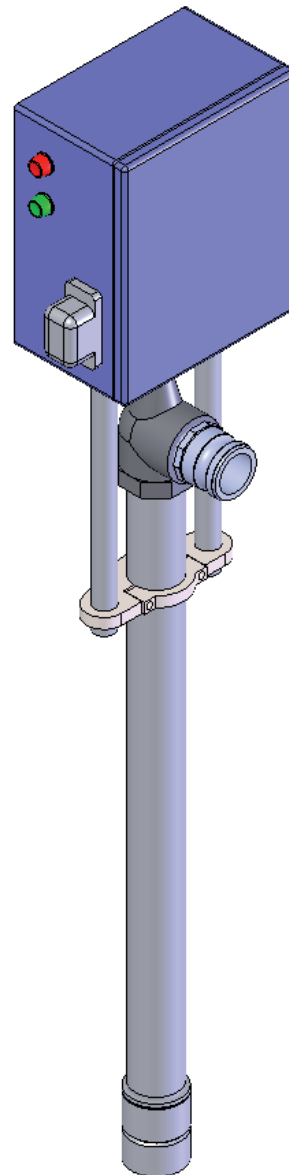




## HYDRANT HANDLER

„Self-sufficient handler“  
for all common hydrants



■ Bächler Top Track AG  
■ Snowtechnology  
■ Industriestrasse 3  
■ CH-5644 Auw

■ +41 (0)56 677 71 00  
■ +41 (0)56 677 71 01  
■ [www.bachler.ch](http://www.bachler.ch)  
■ [info@bachler.ch](mailto:info@bachler.ch)

piste & tracks

snowmaking

fun

## HYDRANT HANDLER

The handler is applicable for nearly all common hydrants through the exchange of the shaft adapter. The full load is separately adjustable from 18 till 100 Nm (with a DIP contactor ) for both rotating directions.

It is also a hand drive without power supply possible by using a deep-frozen-compliant battery. Therefore the closing of the handler is also warranted by a damaged control cable.

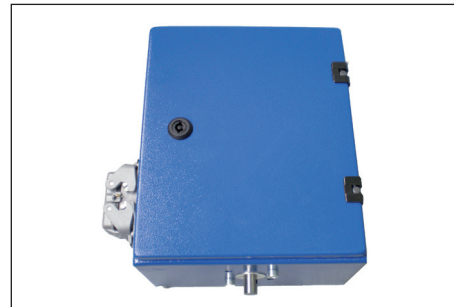
The control inputs can be operated selectively over an internal or external 24VDC power supply. Thereby the handlers can be actuated from the common snowmakers.

### Technical data

Supply voltage:	24VDC, - alternatively 230VAC
Message outputs:	- full load limit „closed“ reached - full load limit „open“ reached - error handler
Operating temperature:	-25°C till +40°C
Storage temperature:	till -40°C
Dimensions:	250 x 160 x 300 mm
Weight:	9.1kg (without power supply 24VDC)

Connection over a 10-pole connector.

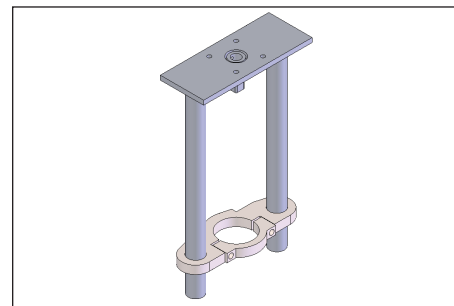
The handler can be delivered also with pressure control and tube monitor and can be applied thereby also by manual machines.



Hydrant handler



Hand drive and 10-pole connector



Standard mounting accessories:  
torque bracket including driving shaft adapter